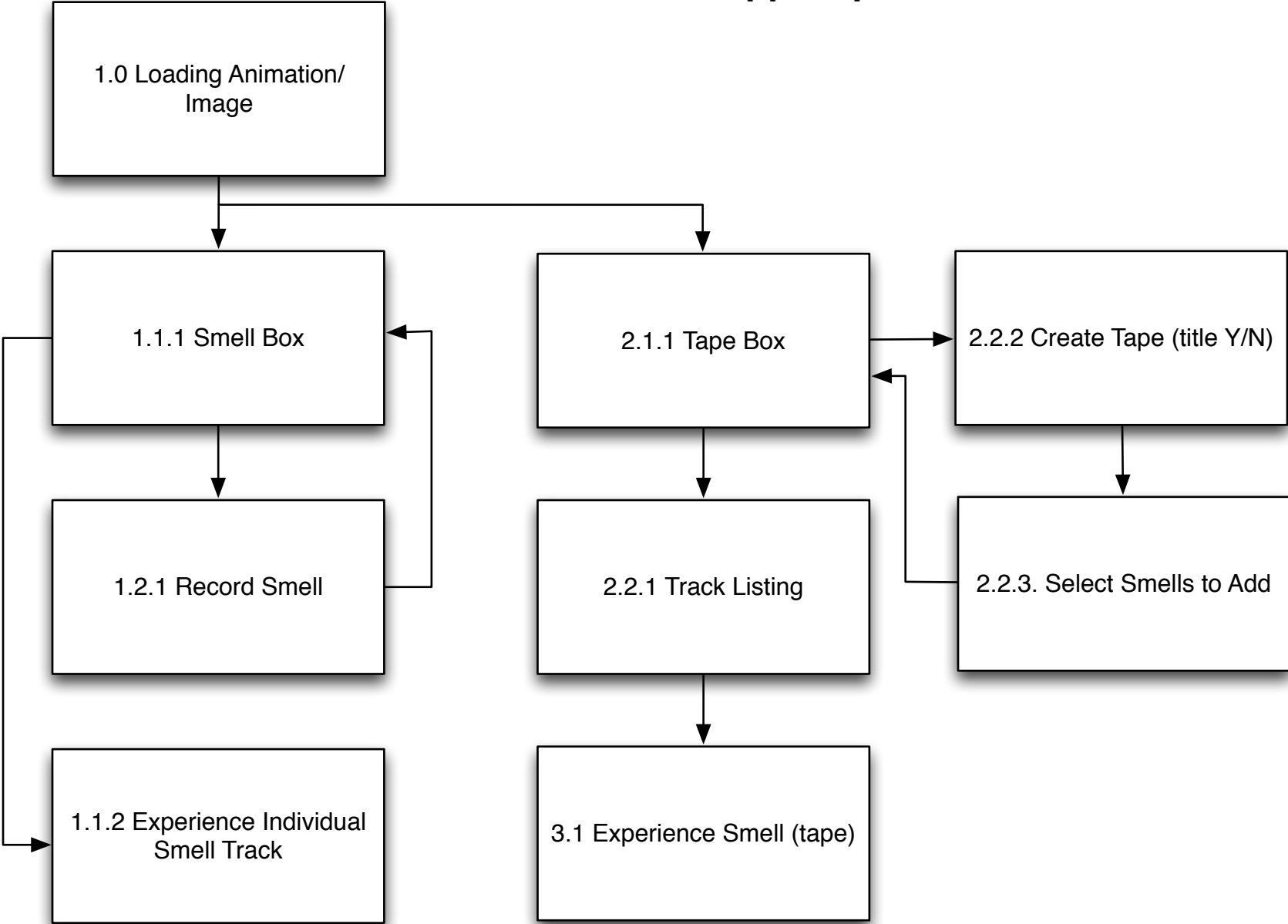


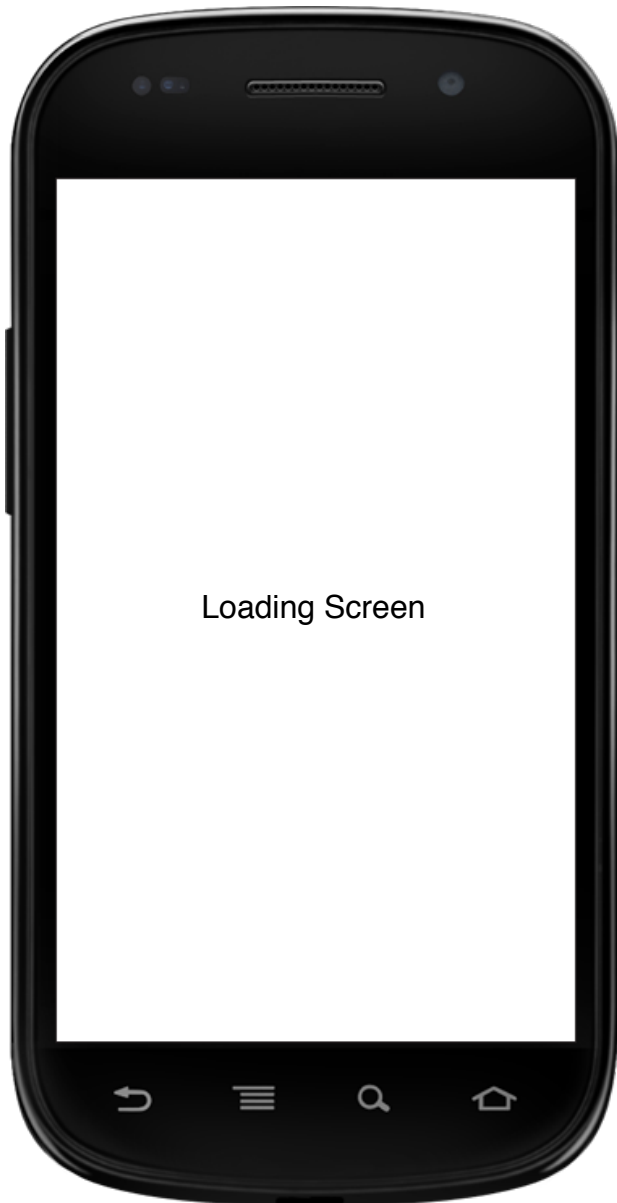
# Smell App Map



## 1.0 - Loading Page

# Notes

This page displays while the app is loading.

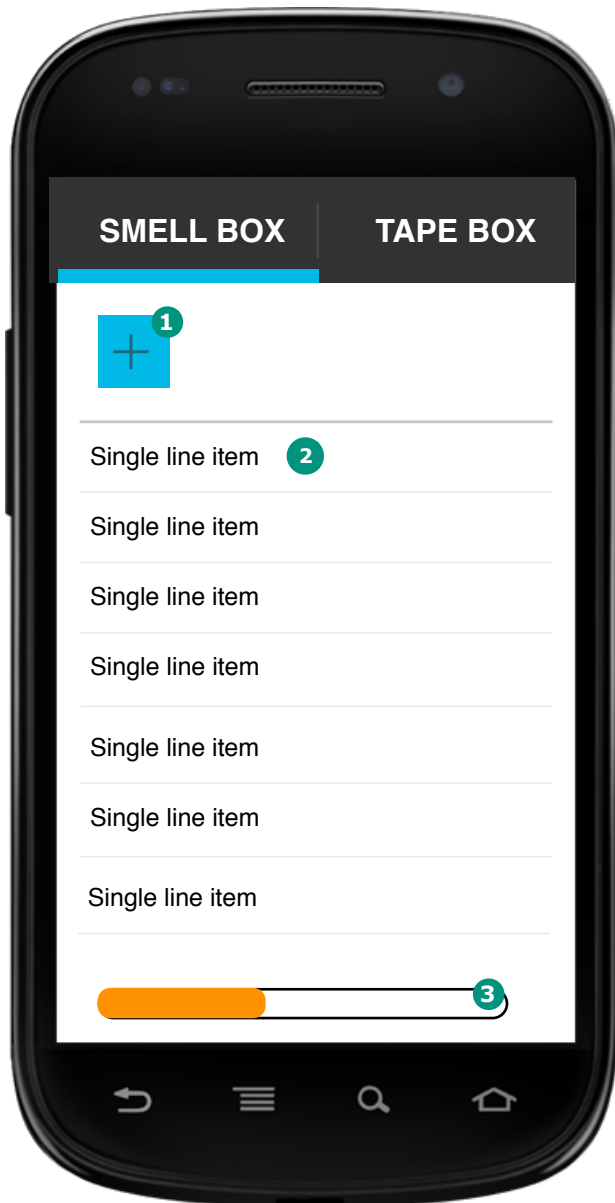


## 1.1.1 - Smell Box

# Notes

This page lists out all of the smells that have been captured, in descending order by date.

1. Record new smell button
2. Tracks
3. Chemical pack meter

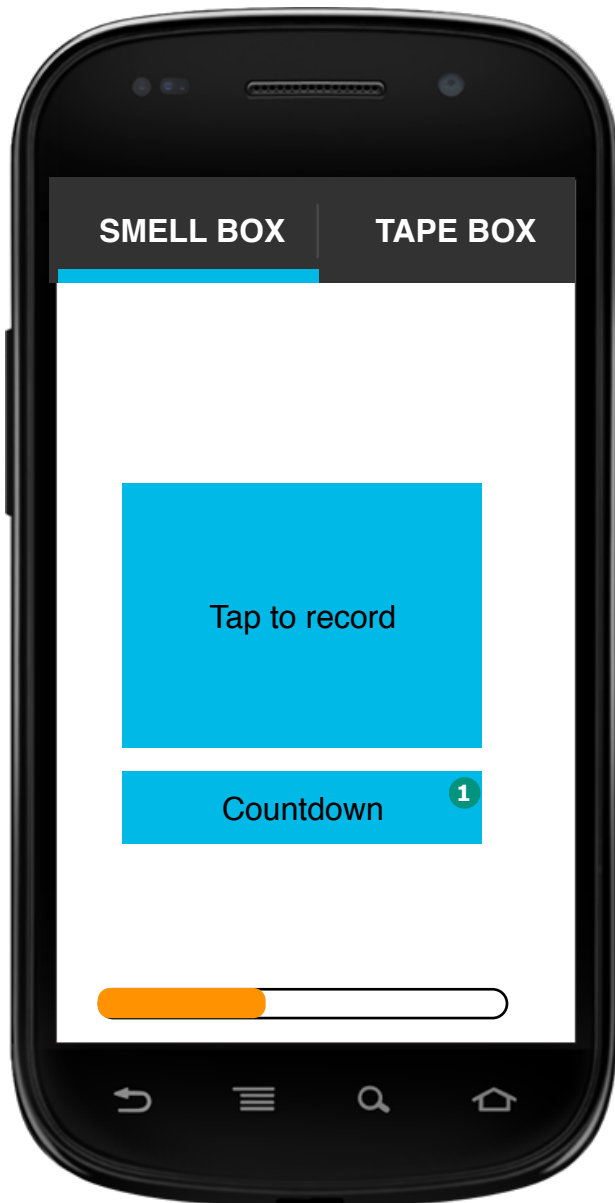


## 1.2.1 - Record Smell

### Notes

This page allows the user to record a new smell.

1. Will countdown until smell is recorded successfully

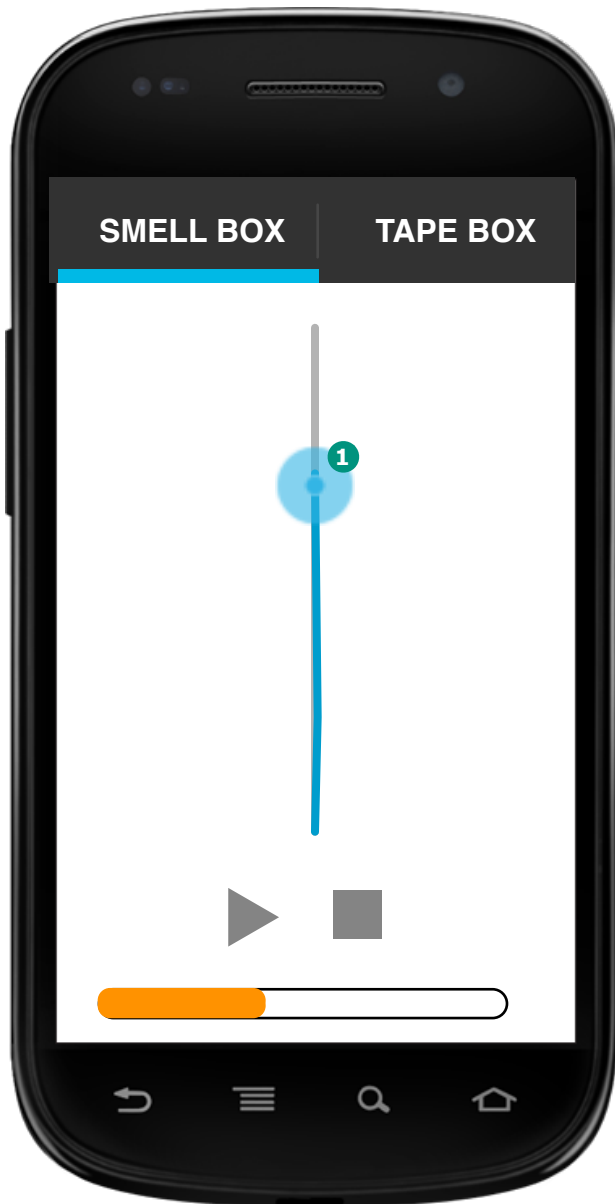


## 1.1.2 - Experience Indv. Smell Track

### Notes

This page allows the user experience a smell from the smell box.

1. Sets smell strength (like volume, kind of).

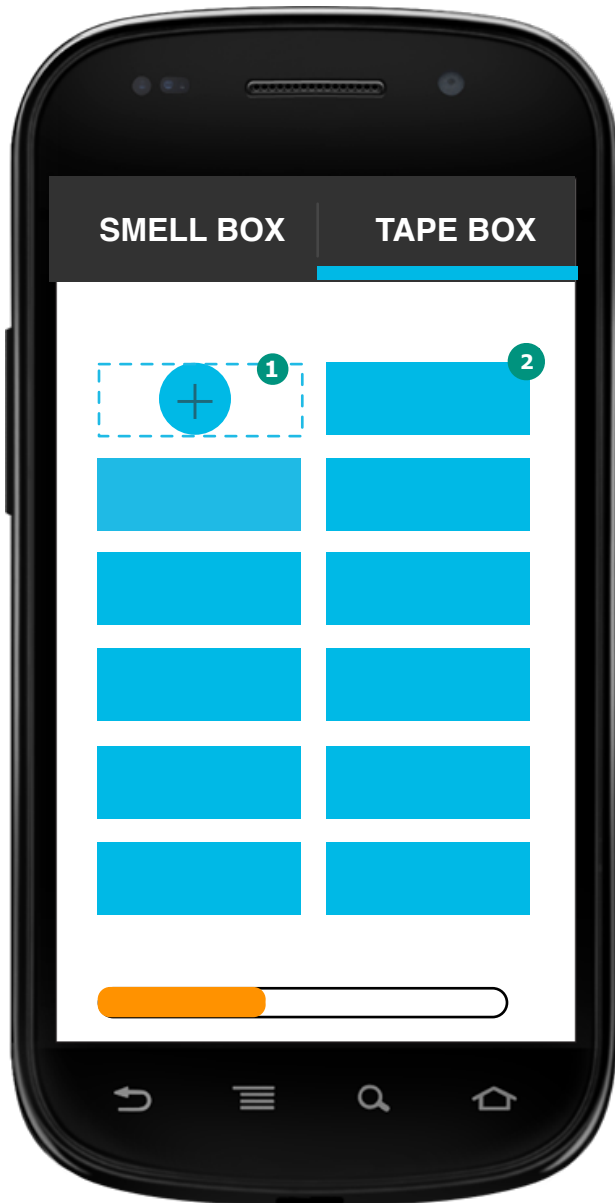


## 2.1.1 - Tape Box

# Notes

This page displays all of the user's mixed tapes.

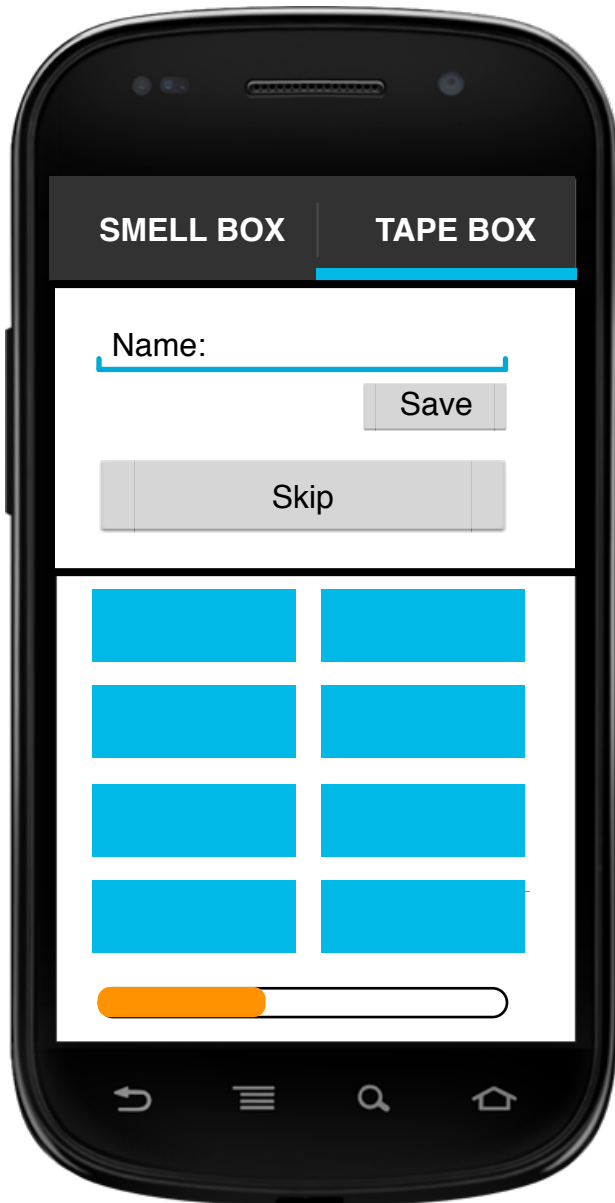
1. Add new mixed tape
2. Existing mixed tapes



## 2.2.2 - Create Tape

# Notes

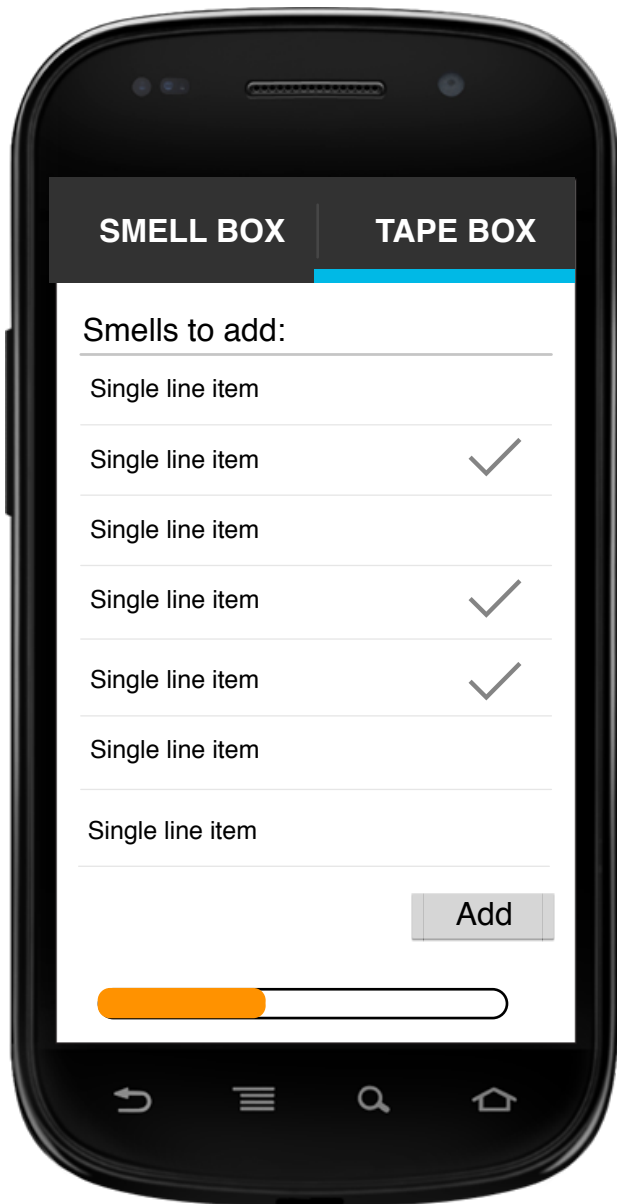
This modal screen creates a new blank tape.



### 2.2.3 - Select Smells to Add

## Notes

This screen allows the user to add pages from the Smell Box into a tape.

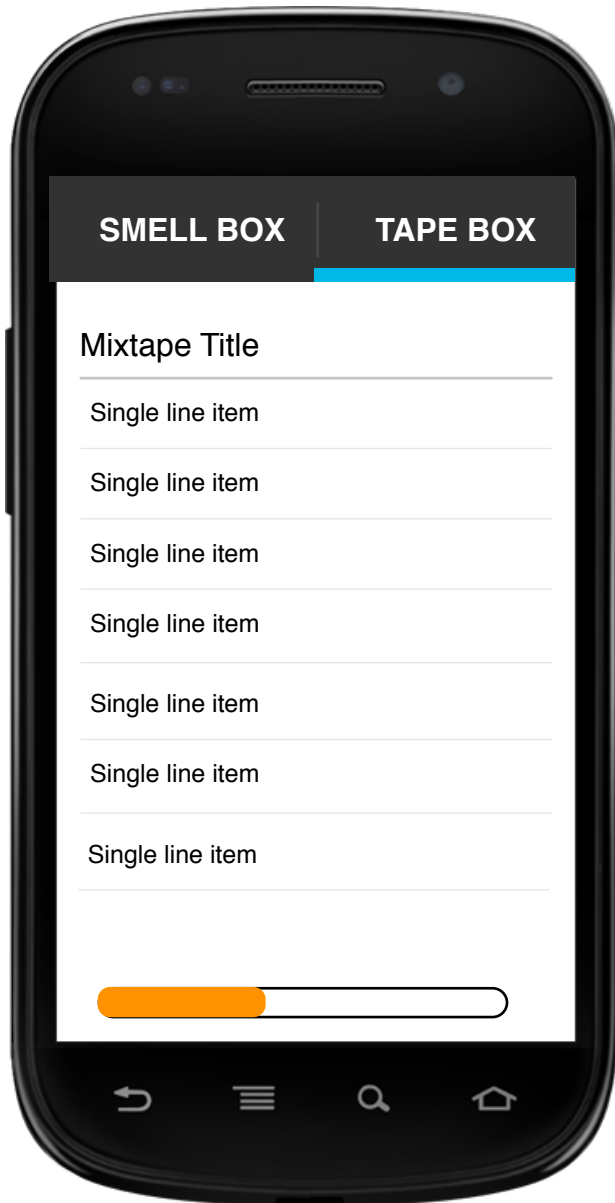




## 2.2.1 - Track Listing

# Notes

This screen allows the user to select an individual track from a mixed tape.



### 3.1 - Experience Smell (tape)

## Notes

This page allows the user to listen to a mixed tape.

1. Change track.

